

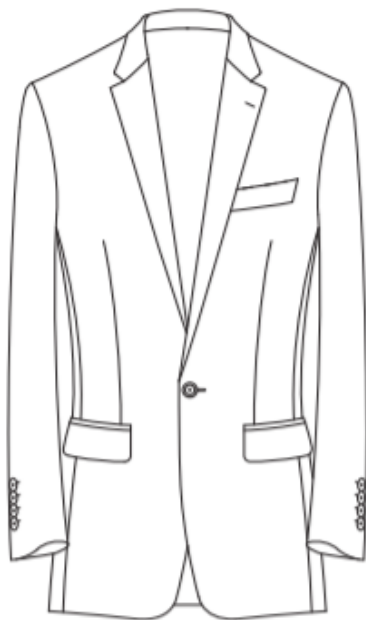


PAOLINI

GARMENT COMPANY

**SUIT DESIGN BOOK**

# Single Breasted Models



One Button

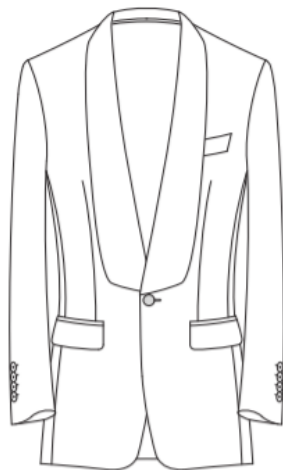


Two Button



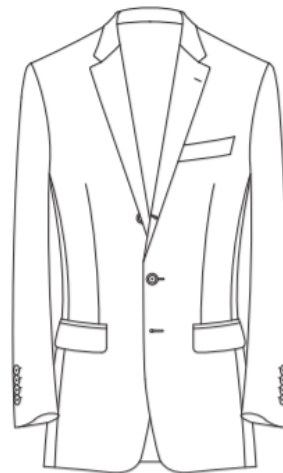
Three Button

# Single Breasted Specialty Models



**Fashion Shawl\***

One Button Only



**Three Button Rolled to Two**

Three Button Only

\* Fashion Shawl lapel width: 3 1/2"

## Lapels & Collars



Notch



Sharp Peak



Peak



Semi-Notch



Semi-Peak



Shawl

Lapel widths ( $\frac{1}{8}$ " increments): 2" minimum - 4  $\frac{1}{2}$ " maximum

Shawl lapel widths: 2", 2  $\frac{1}{2}$ ", and 3"

## Shoulder Styles



Ultra Soft



Natural



Capped



Roped

# Milanese Buttonhole



ML01



ML02



ML03



ML04



ML05



ML06



ML07



ML08



ML09



ML10



1 Color

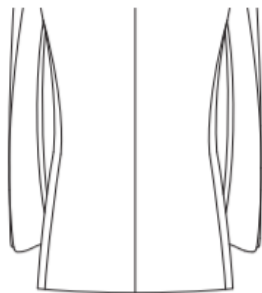


2 Colors

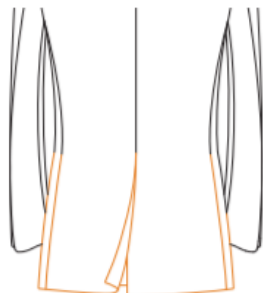


3 Colors

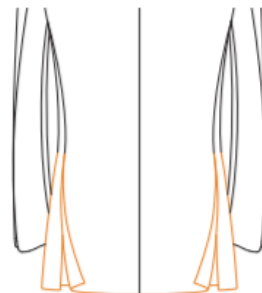
## Vents



None



Center



Double Side

Vent length adjustments:  $\pm 3/4"$ ,  $\pm 1 1/2"$

## Breast Pocket

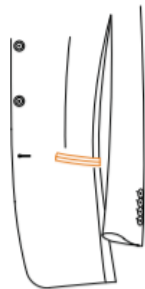


Welt

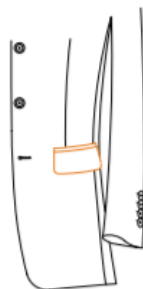
Curved Welt Square  
Corners

Patch

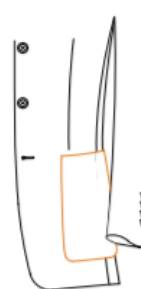
## Exterior Lower Pockets



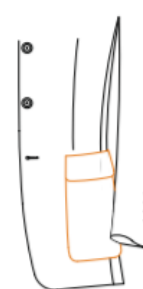
Double Besom



Double Besom with Flap

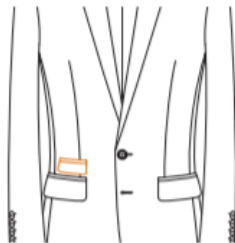


Patch

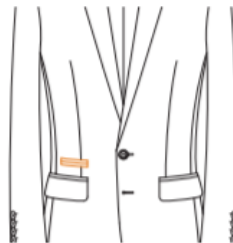


Patch with Flap

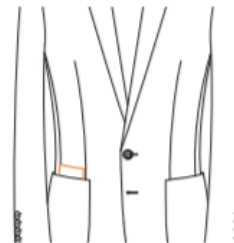
## Ticket Pockets



Double Besom with Flap



Double Besom

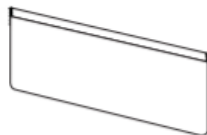


Patch with Half Hidden in  
Lower Pocket

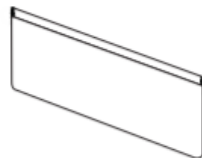
## Pocket Angles



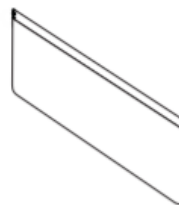
Straight 90°



Small Slant 13°



Mid Slant 20°



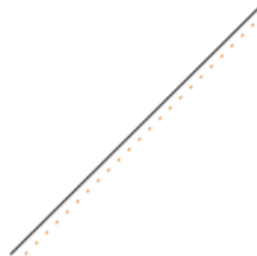
Large Slant 33°

Slanted Pocket: 13° is standard if slanted is selected. Images represent the left jacket pocket

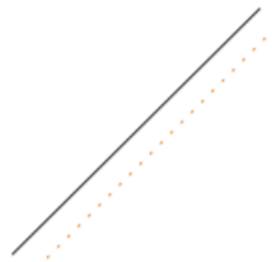
## Pic Stitching



Hidden



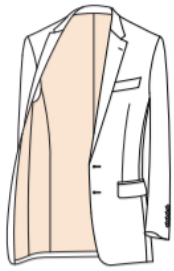
Edge Pic



1/4" Pic



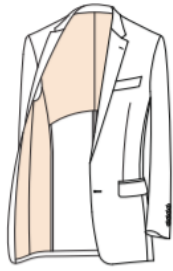
# Lining Placement



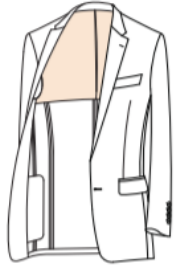
Full



1/2 Flat



1/2 Arched



1/3 Flat

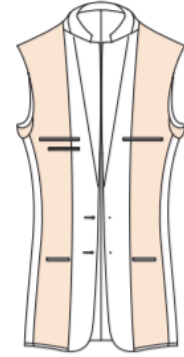


1/3 Arched

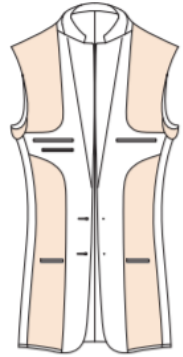


1/4

# Interior Shape



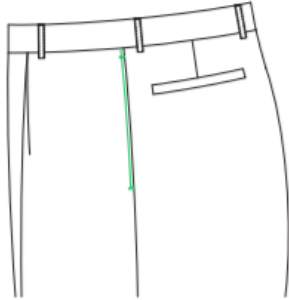
Classic Parallel



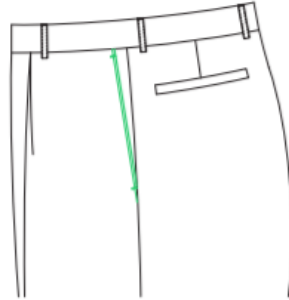
Curved French Facing One Piece

\* 1/3 and 1/4 lined options ONLY available for Tuscany tailoring grade

# Front Pockets



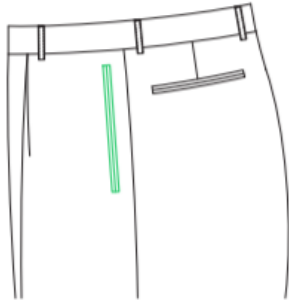
Side Seam



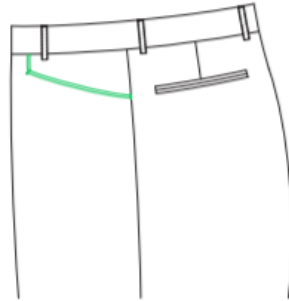
Eighth Top



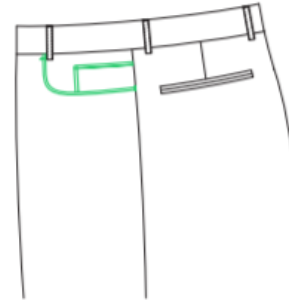
Quarter Top



Offset Double Besom



Western



Jean with Fifth Pocket

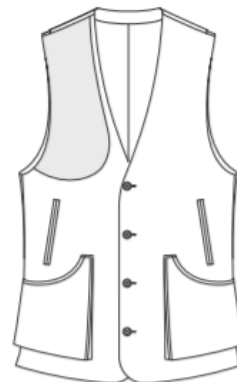
# Vest Models



Three Button



Three Button Horseshoe



Four Button Shooting



Five Button



DB 6x3



DB 6x3 Horseshoe